

# THE GREAT SMOKEY MOUNTAINS



Salamander capitol of the  
world!

By Jack



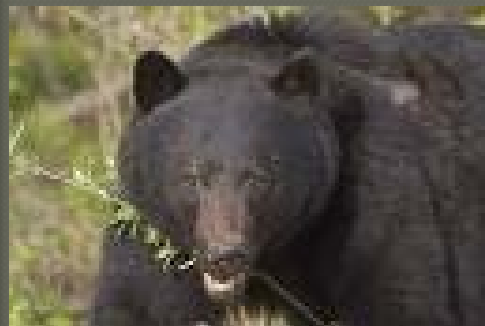
# Animals



**There is over 1,500 black bears in the park.**



**That's over 2 bears per square mile!!**



# Animals





**Elk were re-introduced to the park in  
2001,  
and they live up to 15 years.**



**If that's not  
interesting...**



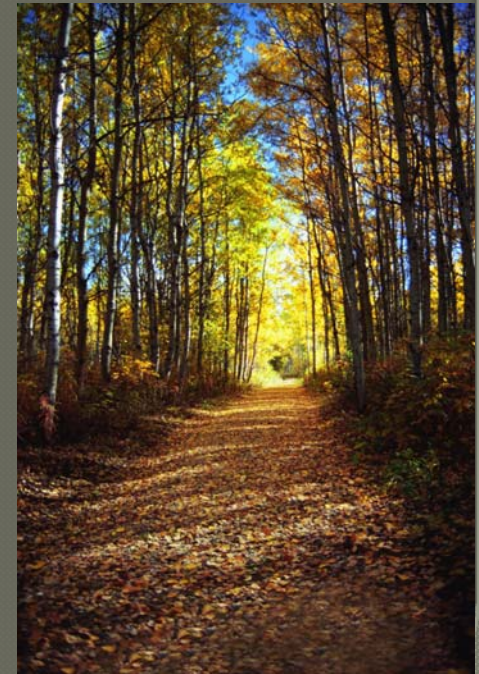


There is more types of trees here,  
Than in **Northern Europe!!**

## PLANTS

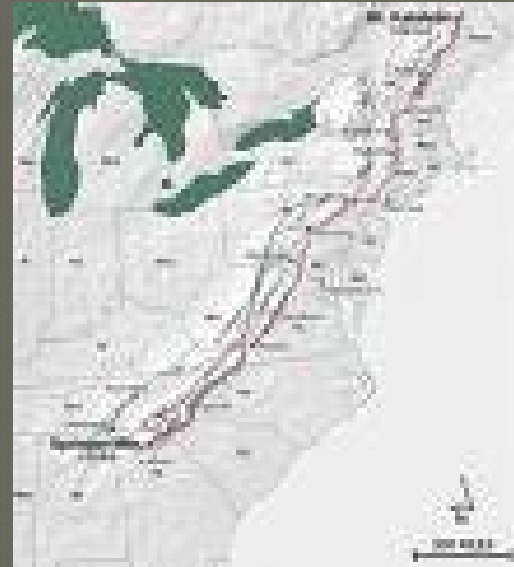


**If you don't like  
climbing trees...**





You can fish in the blue-green streams, or even hike the Appalachian Trail!



(If you don't want to go to the Smokies by now, I have only one thing to say)



The peaks of the Smokies get enough rain to be considered a temperate

# RAIN FORREST!!





Also, blue mist engulfs the  
Smokies in the morning.

Hence, the

*Smokies.*



**THE SMOKIES HAVE THE THIRD HIGHEST  
PEAK EAST OF THE MISSISSIPPI,  
AS WELL AS A 480 FOOT CONCRETE DAM...**

Fonta Dam



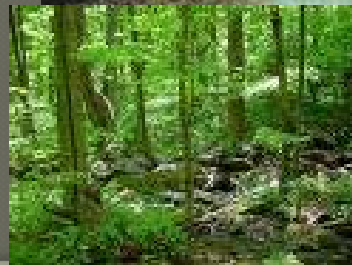
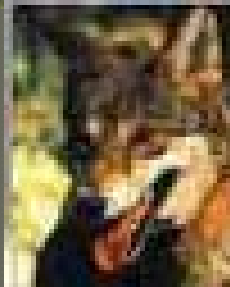
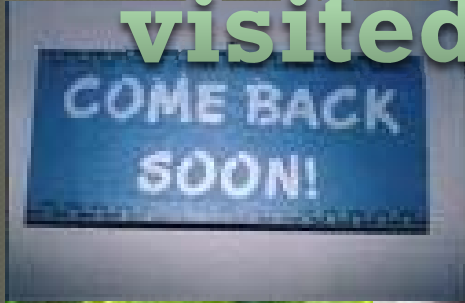


**And beautiful  
waterfalls for  
picture-perfect  
lovers.**





And all this makes it the **most**  
visited National Park in the  
U.S!!





The tops of the Smokies  
get the amount of rain to  
be considered what?

**A: A dessert.**

**B: An official anti-drought reserve.**

**C: A temperate rain forrest.**

**D: A scientific phenomenon.**



Here, in two square miles  
there is how many black bears?

**A: 2**

**B: 4**

**C: 8**

**D: None of the above.**





Based on this Power Point, what two activities might you do in the Great Smokey Mountains National Park?

A: Feed the bears and swim.

B: Bike and swim.

C: Hike and play in blue green water.

D: Fish and hike the Appalachian Trail.

